

Contact Angle Analyzer

Phoenix-Smart (M.A.T)

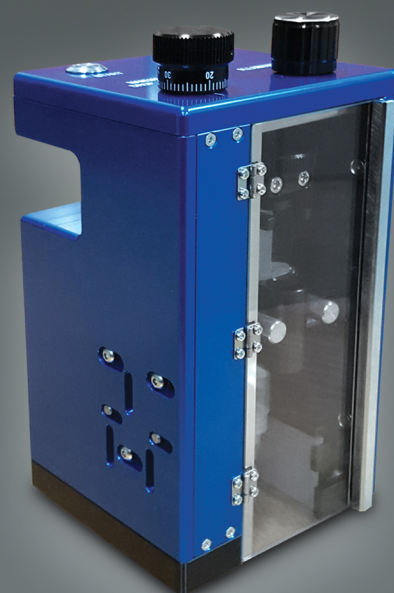
The Phoenix series is designed to offer the flexibility required for Q.A, R&D and engineering process development. The Phoenix-Smart (M.A.T) has been especially designed to be an upgradable and portable device that is easy and convenient to use. The Phoenix-Smart (M.A.T) is virtually measure any sample size without sample cutting preparation. Light-weight means simply control device and simply handling. Phoenix-Smart (M.A.T) adopted USB type camera. Easily connect to notebook and desk top computer device with Surfaceware software.

Features

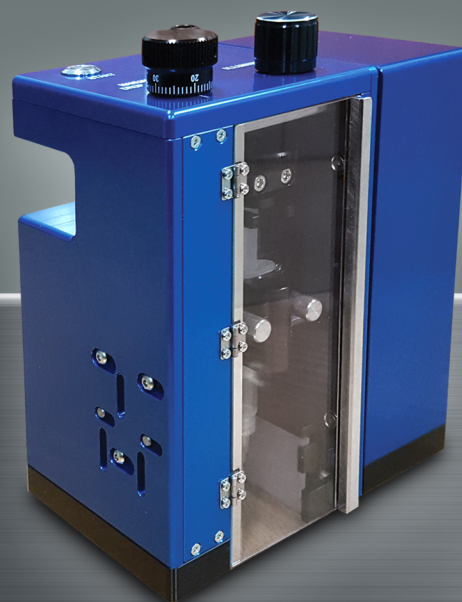
- Data checking instantly without open analysis window by preview result function
- High-resolution and powerful image capture system
- Able to connect to Notebook or Desktop PC via USB port
- Improved precision and reproducibility by the elimination of operator error
- INSIDE OF device condition checking window
- The Up-gradable basic design (manual to Auto and Touch)
- Light-weight
- LED light source

Capabilities

- Sessile drop method
- Static contact angles
- Surface tension by pendent drop method
- Dynamic contact angle (Auto & Touch model)
- Easy surface energy calculation process
- One Touch button control drop volume, capture time (Auto & Touch model)
- Head module moves up and down automatically (Touch model)
- Sequence image is captured by appointed interval time basis
- Data comparison function
- Precisely calculates drop volume
- Unlimited repeat function (Touch model)
- Auto captures at Thermodynamic equilibrium (Touch model)



Phoenix-Smart (Manual, Auto)



Phoenix-Smart (Touch)



Typical Application

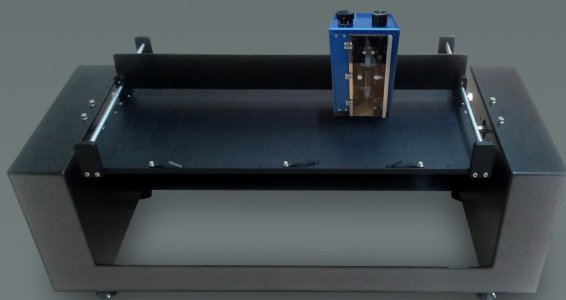
- Semiconductor applications.
- Detection of organic contamination on PCB and electronic components.
- Evaluation of cleanliness / treatment / coating processing.
- Information of hydrophobicity or hydrophilicity solid surfaces.
- Biological application such as the detection and characterization of proteins.
- Analysis of plasma treatments to increase the wettability on polymers surfaces.

Technical Data

• Sample size	Virtually unlimited
• Max Measuring speed	70 FPS
• Light Source	LED
• Contact Angle range	3°~180°
• Accuracy	± 0.1° deg
• Surface tension range	0.1 ~ 1000 mN/m
• Connecting type	USB
• Operating system	Windows 7, Window 8, Window 10
• Dimension (mm)	Manual & Auto type : 90(W) x 80(D) x 159(H) Touch type : 135(W) x 80(D) x 159(H)

Option

- Software control tilting stage



Phoenix-Smart (Manual, Auto)



www.s-eo.com

SEO (Surface Electro Optics)

#946, Kosekdong, Suwon City,
Kyunggido, 441-813, Korea

Phone : +82.31.298.9561

Fax : +82.31.298.9565

E-mail : seo@s-eo.com

SEO reserve the right to change specifications without notice